

J River to HQPlayer

© 2018

September 12, 2018

Chapter 1

Introduction

As its name ("J River to HQPlayer") suggests, this software allows you to use J River Media center as a "front-end" or library manager, and have the files played through HQPlayer from Signalyst instead of J River itself.

Chapter 2

Features

Here is a list of features in the current version:

- Select a track from an album in J River/J Remote and the album will be loaded in HQPlayer and playback will commence from that track.
- Select a different track from the same album in J River/J Remote and HQPlayer will navigate to that track.
- Multi-Disc “Box Sets” are supported where the format of the file name begins with <Disc#>-<Track#>. (Disc number-Track number).
 - This format is used simply to identify that the album is a Multi-disc “Box set”. The actual disc and track numbers will be determined from the tags set in J River, wherever possible.
 - In the case of these Multi-Disc sets, where temporary files need to be created, only the disc containing the track selected for playback will be loaded into HQPlayer, with playback beginning from that track.
- For any album which does not contain valid Track# tags (and Disc# tags where appropriate), the Track# and Disc# will be determined from the track’s file name wherever possible.
- Automatic creation of temporary files for albums which are in a format not supported by HQPlayer, such as Apple Lossless.
- Ability to specify the file type of the temporary files. The default is “flac”; but any of the HQPlayer supported formats may be specified, with the exception of DFF/DSF (DSD) files.
- Ability to selectively force creation of temporary files for albums, even though they may be in a format supported by HQPlayer, with the exception of DFF/DSF (DSD) files.

- Ability to specify that temporary files will always be created (whether or not it is necessary) and the format those temporary files are created in.
- Temporary files are deleted as soon as a track from a new album is selected for playback.
- You specify where the temporary files are created using a path in the “call-jr-ps.cmd” file shown below. If you never create temporary files leave the “temps” parameter at its default value.
- If you associate the file type of the music files in an album with J River, and instruct J River to use this external custom program for them, they will also be played by HQPlayer when you double-click a file from the album in File Explorer. In that case playback in HQPlayer will commence from the track you double-clicked on in File Explorer. This permits you to play music via J River to HQPlayer, even if you haven’t added that music to a J River internal library.
- All tracks from an Artist may be loaded and played in HQPlayer.
 - The tracks may be played in order from each of the artists albums or shuffled.
 - Playback will begin with the track selected for playback in J River/J Remote.
 - The default view may be changed from ‘Album’ to ‘Artist’ in the “call-jr-ps.cmd”, file which acts as a settings file. This will result in all Albums/Tracks from that artist being loaded into HQPlayer.
- J River’s playlists may be played through HQPlayer using this front end.
 - Each playlist you wish to playback through HQPlayer must first be exported in .m3u8 format to the same folder where this script and its associated files reside.
 - Alternatively if you associate .m3u8 files with J River and instruct J River to use this external custom program for them, they will be played by HQPlayer when you double-click one of these playlist files in File Explorer.
 - Remember to export “Smart Playlists” periodically to replace older versions as these playlists are updated dynamically, though only within J River itself.
 - Optionally you may Shuffle the playlist before sending it to HQPlayer. This is achieved with a custom tag which can be set in J River/J Remote.
 - Playback from the playlist loaded in HQPlayer will begin with the track selected for playback in J River/J Remote.
 - The tracks from the playlist may be played in order or shuffled.

- The default view may be changed from 'Album' to <playlist name> in the "call-jr-ps.cmd", file which acts as a settings file. In this case <playlist name> is replaced by the name of the playlist you exported from J River to the folder containing this script. (The '.m3u8' file extension is excluded from this name in the "call-jr-ps.cmd" file). This will result in all tracks from that playlist being loaded into HQPlayer.
- Shuffle may be set to 'Yes' in the "call-jr-ps.cmd" file, in which case whichever view is set in this same file (Album, Artist or <playlist name>), the tracks will be shuffled before being loaded into HQPlayer. The default for the global 'Shuffle' setting is 'No'.
- Albums, Artists and Playlists may all be played in repeat mode.
- Ability to pause/resume or stop HQPlayer settings from within J River/J Remote (optional feature, see below).
- Ability to change the following HQPlayer settings from within J River/J Remote:
 - Load an entirely different HQPlayer Settings file.
 - Filter
 - Shaper (Ditherer or Modulator)
 - Sample Rate
 - Mode (Auto, PCM or SDM (DSD))
 - The HQPlayer settings to apply are determined from custom tags, which you first have to set up within J River.
 - The HQPlayer settings that will be applied are determined by how the tags are set in the actual track(s) selected for playback.
 - Use of this feature is entirely optional. You are not obliged to set-up custom library fields to create these tags in J River, or enter values for the tags. If the tags are not present or are empty the settings that you have in place in HQPlayer will be applied, until you change them within HQPlayer itself.
 - You should, however, always have a 'default.xml' settings file which you have created and exported from within HQPlayer itself, for the settings you wish to be applied in the majority of cases. Any settings you apply to particular tracks or collections of tracks via the custom tags will be treated as exceptions to the default settings.
 - It may also be useful for you to create a settings file named 'extreme.xml' for cases where the 'poly-sinc'xtr' family of filters will be applied. (See below).
 - At all times where specific HQPlayer settings are requested, a check is made to determine if the Filter, Shaper, Sample Rate or Mode you

have set in the tag is available. These settings are all context dependant and only the settings available in HQPlayer, will be applied. This depends on several factors, such as, the DAC you are using, the mode which is being applied, and the sample rate and format of the original source file. The available settings are fetched prior to determining if the settings you've requested can actually be applied. Any settings from custom tags which cannot be applied will be ignored. The Mode setting is attempted first, so the filters and shapers available for that mode can be fetched.

- Apart from Artists and Playlists, by default this front end to HQPlayer will always assume you want to play from an album. So only the tracks from the album containing the track selected for playback, will be loaded into HQPlayer. The implications of this are that if you start playback from any view other than “Artist” “Album” or a “Playlist”, the only tracks which will be loaded are the rest of the tracks from the Album which contains the track selected for playback. To get around this, if you want to play from, say the Genre view, you should create a playlist for this genre (if it doesn't already exist) in J River and export it in .m3u8 format to this script's folder.
- There is one exception to the above rule and that is “Podcasts”. Podcasts which you've downloaded to J River can be played back through HQPlayer from J River/J Remote. In that case only the episode selected for playback will be loaded and played back in HQPlayer. Each episode is a single track. A temporary file will be created for the Podcast episode as it will be in a format, such as MP3 which is not supported by HQPlayer.
- Additionally from version 1.12 onwards there is limited support for playing streams from the Qobuz and Tidal services. Two options exist for this as follows:
 - Playing from a UPnP server with J River set up as a DLNA/UPnP renderer.
 - * Unfortunately this is limited to just one track at a time, because once the UPnP stream URL is handed over from J River to HQPlayer the sync between the UPnP server and J River is lost and playback also stops in the UPnP server. For one track at a time playback, it is fine though. So if you enjoy playing dj, this might be for you. I've tested this with the apps “mconnect” on IOS and BubbleUPnP on Android.
 - * For continous playback to be achieved on Windows the only solution I know of is my own “Supersonic” add-on for Kodi. This can send the stream urls directly from Kodi to HQPlayer though, so you might ask, “why involve J River as another middle-man?”. It does work well though, especially as from version 1.5 onwards

of Supersonic, Kodi's own playback of the streams can be optionally turned off. Continuous playback is still achieved, since Supersonic waits for the duration of the currently playing track before fetching the next url from Qobuz or Tidal. If you have both J River and Kodi you might want to compare the following options to determine which works best for you:

- Kodi -> Supersonic -> J River -> HQPlayer.
- Kodi -> Supersonic -> HQPlayer.

Chapter 3

Limitations

The only real limitation some people may object to is that there is no indication of what is playing or playback progress in J River/J Remote. That's because nothing is playing in J River! All playback is in HQPlayer. I actually consider this a feature, because J River is using absolutely no resources during playback as far as I can tell, and so can't be having any impact on sound quality.

Once again, if you need feedback on what's playing or playback progress, other than using your ears, a temporary VNC session to take a look at HQPlayer, is all I can suggest, for a "headless" server (without Monitor, Mouse, Keyboard). If your server is not headless, then obviously you can look at the monitor.

Chapter 4

Installation

You will receive/have received the distribution in a .zip file named, jr-hqp.zip.

When you extract it you will find the following files/directories in a folder named “jr-hqp”:

- log.text
 - Used for de-bugging
- jrexp.ps1
 - The actual script
- vars.text
 - Also used for de-bugging
- arguments.txt
 - The arguments you need to paste in to J River’s file association, “arguments” field
- temps.text
 - A record of the temporary files which have been created.
- album.text
 - A record of the Album currently playing
- artist.text
 - A record of the Artist currently playing
- playlist.text
 - A record of the Playlist currently playing

- `current_tracks.text`
 - A record of the currently loaded Artist or Playlist
- `track.text`
 - A record of the currently playing track
- `HQPlayer Rates.txt`
 - An example of the format for HQPlayer rates, so you can set them correctly in J Remote/J River (if you wish to).
- `call-jr-ps.cmd`
 - The initial script that gets called by J River and passes the arguments to the Powershell script.
- `change log.txt`
 - Summary of changes up to this version
- `ffmpeg`
 - A distribution of ffmpeg needed to create any temporary files.
- `Manual.pdf`
 - This manual.

Move the extracted “jr-hqp” to whichever location you desire.

4.1 The all important “call-jr-ps.cmd” file

This is the file which J River will need to point to, when you set up a file type in J River to point to this External (custom) program for that file type.

Here are the contents of the “call-jr-ps.cmd” file:

```
set datapath=%~dp1
    not editable leave as is
set filepath=%~f1
    not editable leave as is
set extension=%~x1
    not editable leave as is
set temps=C:\temp
    ...or any valid path
```

set hqpath=C:\Program Files\Signalyst\HQPlayer Desktop 3\hqp-control.exe

Your path to the hqp-control.exe program if it differs from this, otherwise leave alone.

set stoppause=No

Set to 'Yes' if you want to use stop and pause features. (See below) otherwise leave alone.

1. If you set this to "Yes" the following behaviour will occur:
 - (a) Tapping in J Remote/J River on the track that's currently playing will cause playback to pause in HQPlayer.
 - (b) Tapping on that same track again in J Remote/J River will cause playback of that track to resume in HQPlayer from the point where it was left when paused.
 - (c) Tapping on any other track in J Remote/J River (either from the same or a different album) will cause playback in HQPlayer to stop.
 - (d) Tapping on that same track, or any other track in J Remote/J River will cause playback to start from that track in HQPlayer. Any new tracks which need to be loaded, will first be loaded into HQPlayer, after clearing current tracks.

set alwayscreatetemps=No

Set to 'Yes' if you wish temporary files to be created in all cases. Otherwise leave at 'No'.

set tempformat=flac

set to either 'wav' or 'aif' if you prefer any temp files to be created in one of these formats. Otherwise leave at the default 'flac'.

set view=Album

Set to 'Artist' if you want all tracks loaded for that artist, or set to the name of a playlist exported from J River to the folder where this script resides, in .m3u8 format. Otherwise just leave at the default 'Album'.

set shuffle=No

Set to 'Yes' if you want the 'Album' 'Artist' or playlist tracks shuffled before loading to HQPlayer. Otherwise leave at the default 'No'.

```
powershell -Mta -executionpolicy bypass C:\jr-hqp\jrexp.ps1
```

You must not alter the first 3 lines of this file and you will only need to alter one or more of the remaining lines if you wish to apply something other than the defaults shown here.

1. Please place the jr-hqp folder at the root of your C: drive. This will ensure the powershell script is correctly found as per the last line above..
2. Save the file after making the necessary changes and you're done with the script installation part. Next we need to configure "J River Media Center" to use this script.

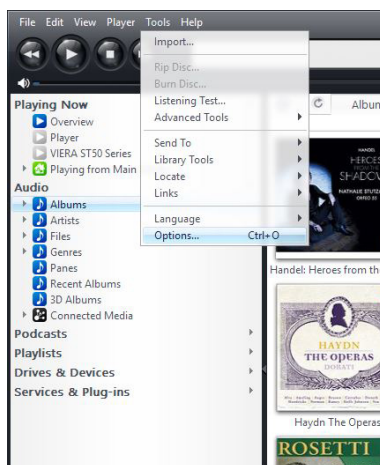
Chapter 5

Configure J River Media Center

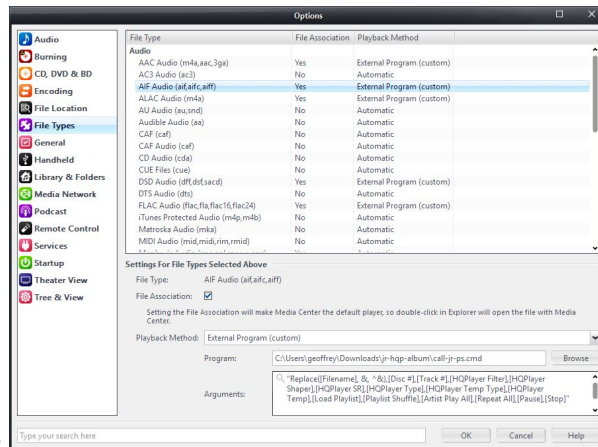
5.1 Required

The most important steps to configuring Media Center are as follows:

1. With Media Center's main interface window open on your screen, choose "Options" from the "Tools" menu.

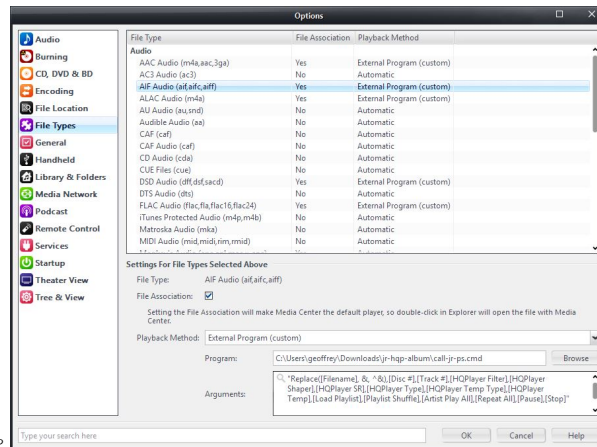


2. Choose *Tools->Options*
3. In the left hand pane of the window that appears choose "File Types"



4. Choose File Types

5. For each File Type where you want the music files to be played through HQPlayer instead of Media Center, under “Audio” click to select the File Type in the main list of file types. The example here is “AAC”. (Incidentally for Apple Lossless to be associated with HQPlayer you’ll need to associate both AAC and ALAC file types with this script).
6. Underneath the list of file types place a check mark in the “File Association” box.
7. In the drop down menu next to “Playback Method”, choose “External Program (custom)”.
8. The field next to “Program:” will need to hold the path to the calling command (“call-jr-ps.cmd”). Click on the Browse button next to this field to navigate to where you have this .cmd located (along with the rest of the scripts files).
 - (a) Note, you will have to ensure that “All Files (*.*)” is chosen from the drop down menu next to the “File name” field in the “Select Filename” window, as “.CMD” files do not show up by default.



9. Navigate to the .cmd file

10. In the “Arguments” field (which isn’t labelled; but appears underneath the “Program:” field) you will need to enter the string of arguments that needs to be passed to the calling script.

- (a) Note: the arguments list shown in the image has since changed. Use the appropriate argument string from the text below.
- (b) The easiest and safest way to do this is to copy the argument string from the “arguments.txt” file supplied alongside this script and paste the string into this field.

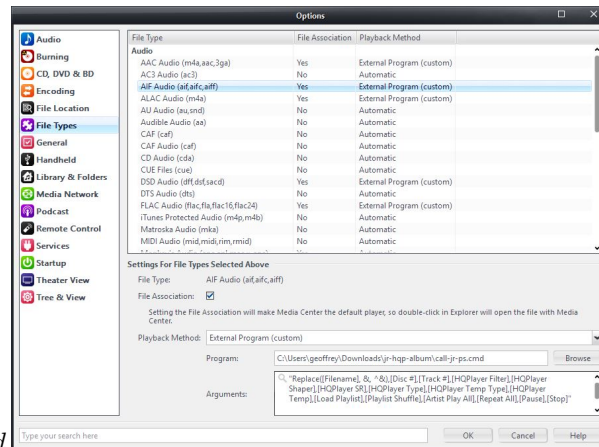
The arguments are also repeated here:

- i. Minimum options:

- A. "Replace([Filename], &, ^&),[Disc #],[Track #]"

- ii. Full options are not as follows:

- A. "Replace([Filename], &, ^&),[Disc #],[Track #],[HQPlayer Filter],[HQPlayer Shaper],[HQPlayer SR],[HQPlayer Type],[HQPlayer Temp Type],[HQPlayer Temp],[HQPlayer Settings],[Load Playlist],[Playlist Shuffle],[Artist Play All],[Repeat All]"



11. Arguments field pasted

12. Repeat this series of actions for each of the file types that you wish to be played through HQPlayer.

That's it! You don't need to go any further for music files in these file formats to be played through HQPlayer.

The next section will walk you through the procedures you'll need to carry out to take advantage of each of the additional features this J River Front End to HQPlayer provides.

For these to work you will need to have pasted the full argument string:

"Replace([Filename], &, ^&),[Disc #],[Track #],[HQPlayer Filter],[HQPlayer Shaper],[HQPlayer SR],[HQPlayer Type],[HQPlayer Temp Type],[HQPlayer Temp],[HQPlayer Settings],[Load Playlist],[Playlist Shuffle],[Artist Play All],[Repeat All],[Pause],[Stop]"

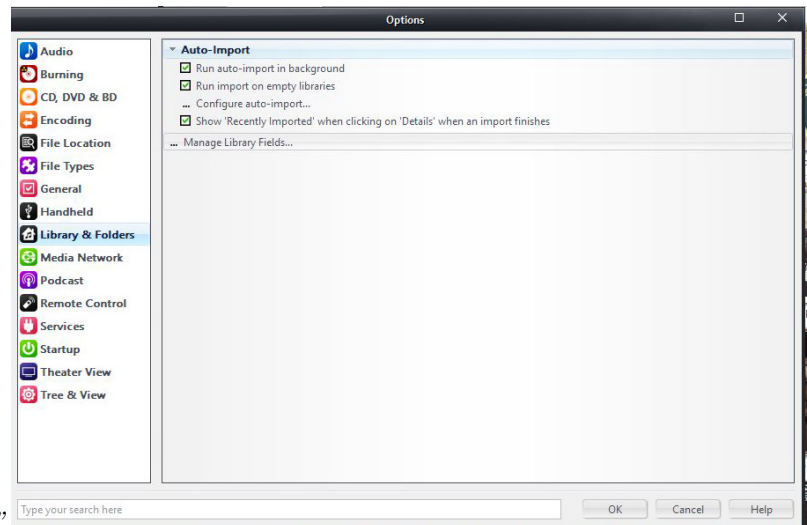
5.2 Optional

These optional features are provided by Media Center's "Custom Library Fields". These show up as tags, which can be set within Media Center or the J Remote apps on IOS or Android.

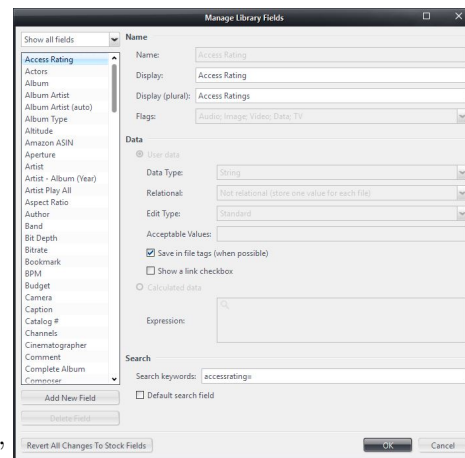
5.2.1 Repeat All feature

This feature simply causes whatever, Album, Artist, Playlist or Podcast is being played by HQPlayer to be repeated, until you choose the next item to play through HQPlayer with repeat set to "No".

1. Once again choose "Options" from the "Tools" menu. This time select "Library & Folders" from the left window pane.



2. Choose “Library & Folders”



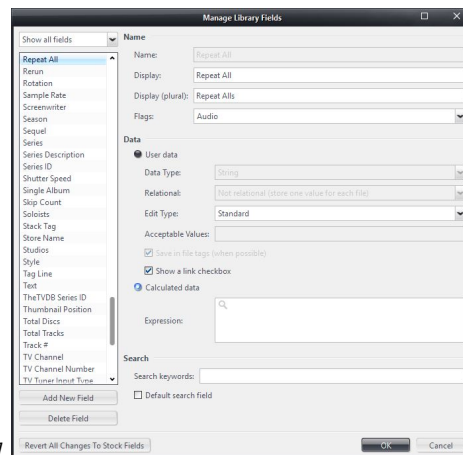
3. Click on “Manage Library Fields”

4. On the left hand side under the list of current Library Fields click on the “Add New Field” button.



5. *Add New Field*

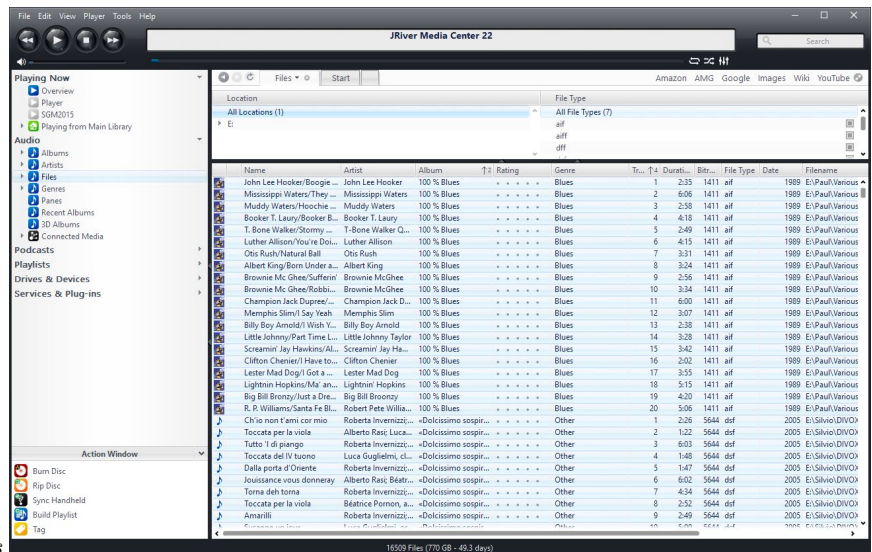
6. Type "Repeat All" exactly as shown and click on the "OK" button.
7. Enter the options and parameters exactly as shown for "Repeat All" in the "Manage Library Fields" window.



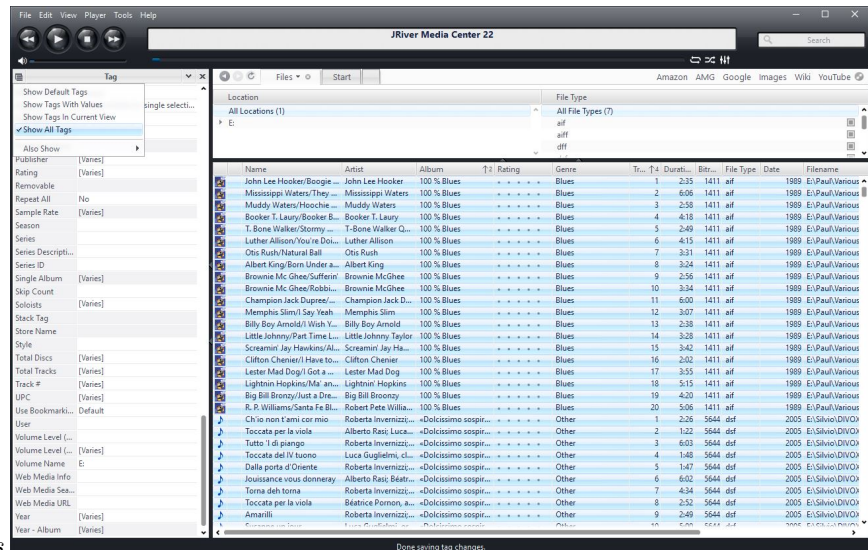
8. *Complete details for Repeat All*

- (a) In the "Flags" drop down menu, uncheck all "Flags" apart from Audio.
- (b) Under "Data" Select "User Data" and ensure all the fields and check marks are as shown in the Manage Library fields image:
 - i. "Data Type:" = String
 - ii. "Relational:" = Not relational (store one value for each file)
 - iii. "Edit Type:" = Standard
9. Once you've ensured the correct values are completed, click on the "OK" button.
10. Now our "Repeat All" custom field will show up as a Tag in all audio files. It can only have an effect on HQPlayer run via this script.

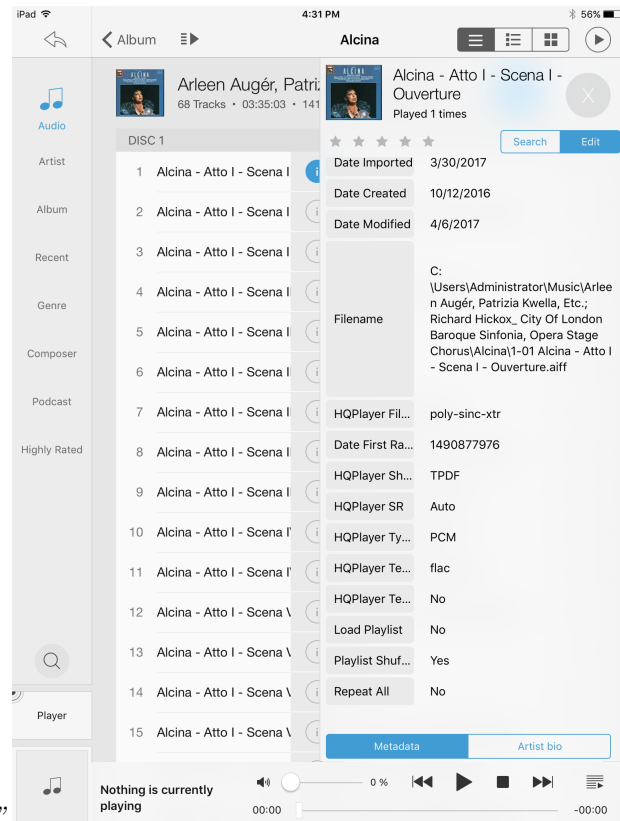
11. “Repeat All” and all the other optional tags described in this section will only show up under “Meta-Data” in the J Remote app, if they actually hold a value. There are only two possible values for the “Repeat All” tag:
 - (a) Yes
 - (b) No
 Any other values entered for this tag will simply be ignored.
12. In order to ensure the “Repeat All” tag will show up in J Remote, it needs to have a value. Since we don’t usually want to repeat the Albums; etc. we play, we’ll set this default value to “No” for all files.
13. In Media Center’s main interface, under the “Audio” view click the right pointing arrow if necessary to reveal the Audio categories.
14. Choose “Files”
15. Single click on any file and hit “ctrl+A” on your keyboard or choose “Select All” from the Edit menu, to select all the Audio files in your library.



16. *Select All audio files*
17. Right-click (or equivalent) anywhere in the selected file list and choose “Tag” from the drop down menu.
18. Make sure “Show All Tags” is selected in the small drop down menu at the top left hand corner of the Tags list.



19. *Show all tags*
20. Scroll as necessary to reveal the “Repeat All” tag you’ve just created.
21. Click in the value field next to it and type “No”.
22. As long as you have all the files still selected in your library, the “Repeat All” tag will be updated in Media Center’s library for each file. The amount of time this takes, will obviously depend on the size of your library.
23. Finally let’s verify that the “Repeat All” tag does indeed show up in the J Remote app with the value “No”.
24. Open the J Remote app on your device and select any Audio File. For this demonstration, I’m using the J Remote app on my iPad.
25. On iPhone you need to hold your finger down on a track until the “Meta-Data” is displayed for that track. J Remote on iPad provides access to the Meta-Data by tapping on the “i” button.
26. Tap on “Meta-Data” and scroll as necessary until the “Repeat All” tag shows up.



27. *J Remote* showing “Repeat All”

28. If you were to scroll up to the top of this screen and tap the “Edit” button, then change the value of “Repeat All” to “Yes”, save the changes and play from this track, HQPlayer would be placed in “Rpt” mode and the entire album would be played on repeat.
29. “Repeat All” will be turned off as soon as playback is started for a track from another Album which has the “Repeat All” tag set to “No”. Before you do that you might want to set it back to “No” for the track in this example, if you want to avoid the album being repeated each time you start playback from this track.
30. If, on the other hand, you want this album to be repeated when you play it, regardless of which track playback is started from, then when you edit the “Repeat All” tag for any track of the album, you will want to choose the option to save the change to all tracks of the album.

In most cases you won’t want to make use of the a ‘Repeat All’ tag. It is only shown here as a simple example of how to set up a custom tag in J River. The procedure outlined here applies to all the custom tags used by this script. The tags are all set up the same way, with one small exception, shown at the end of

this section. Their names must be entered exactly as shown in the list of these tags below. The possible values are also shown below for each tag.

The tag names correspond exactly to those shown in the arguments.txt file and used in the arguments field we completed under Chapter 5, Section 5.1 Required.

5.2.2 HQPlayer Settings tags

- HQPlayer Settings
 - The name of a settings file created and exported from HQPlayer (excluding the .xml extension).
 - The ability to load a settings file allows you to change all settings for HQPlayer in one go, whereas the remaining tags shown below only apply to the setting name indicated by the tag name (i.e. 'Filter', 'Shaper'; etc.).
- HQPlayer Filter
 - Sets HQPlayer's upsampling filter
 - Possible values:
 - * In PCM mode:
 - none
 - IIR
 - FIR
 - asymFIR
 - minphaseFIR
 - FFT
 - poly-sinc
 - poly-sinc-mp
 - poly-sinc-short
 - poly-sinc-short-mp
 - poly-sinc-hb
 - poly-sinc-ext
 - poly-sinc-mqa
 - poly-sinc-mqa-mp
 - poly-sinc-xtr
 - poly-sinc-xtr-mp
 - sinc
 - polynomial-1
 - polynomial-2
 - minringFIR
 - minringFIR-mp

- closed-form
 - closed-form-fast
 - closed-form-16M
- * In SDM (DSD) mode:
 - poly-sinc
 - poly-sinc-mp
 - poly-sinc-short
 - poly-sinc-short-mp
 - poly-sinc-hb
 - poly-sinc-ext
 - poly-sinc-mqa
 - poly-sinc-mqa-mp
 - poly-sinc-xtr
 - poly-sinc-xtr-mp
 - poly-sinc-2s
 - poly-sinc-mp-2s
 - poly-sinc-shrt-2s
 - poly-sinc-shrt-mp-2s
 - poly-sinc-hb-2s
 - poly-sinc-xtr-2s
 - poly-sinc-xtr-mp-2s
 - minringFIR
 - minringFIR-mp
 - closed-form
 - closed-form-fast
 - closed-form-16M
- HQPlayer Shaper
 - In PCM mode:
 - * none
 - * NS1
 - * NS4
 - * NS5
 - * NS9
 - * RPDF
 - * TPDF
 - * Gauss1
 - * shaped
 - In SDM (DSD) mode:

- DSD5
 - DSD5v2
 - ASDM5
 - DSD7
 - ASDM7
 - DSD5v2 256+fs
 - DSD7 256+fs
 - AMSDM7 512+fs" 7
- HQPlayer SR
 - In PCM mode:
 - * 0
 - * 32000
 - * 44100
 - * 48000
 - * 64000
 - * 88200
 - * 88200
 - * 96000
 - * 128000
 - * 176400
 - * 192000
 - * 256000
 - * 352800
 - * 384000
 - * 512000
 - * 705600
 - * 768000
 - * 1024000
 - * 1411200
 - * 1536000
 - In SDM (DSD) mode:
 - * 0
 - * 2048000
 - * 2822400
 - * 3072000
 - * 4096000
 - * 5644800

- * 6144000
- * 8192000
- * 11289600
- * 12000000
- * 12288000
- * 22579200
- * 24000000
- * 24576000
- * 45158400

- HQPlayer Type
 - Auto
 - PCM
 - SDM (DSD) S

If you choose to enter one of these values into its corresponding tag, the value must be entered exactly as shown above.

When setting up a custom library field in J River you can limit the allowed values by using the acceptable values field. The acceptable values are separated by a semi colon, as follows:

HQPlayer Shaper = none;NS1;NS4;NS5;NS9;RPDF;TPDF;Gauss1;shaped;DSD5;DSD5v2;ASDM5;DSD7;AS256+fs;DSD7 256+fs;AMSDM7 512+fs

There's no need to enter all possible values in the "Acceptable values" field; just the ones you are likely to apply, which could be a sub-set of these. The same applies to HQPlayer Filter, HQPlayer Type (mode) and HQPlayer SR (sample rate).

5.2.3 Default settings file

You should always have a 'default.xml' file created and exported from HQPlayer for the settings that you most usually apply. Any other settings via the above custom tags will be exceptions to those in the 'default' settings file.

J River to HQPlayer will always re-load the default settings file before applying settings in any of the above custom tags. This ensures you always return to the default settings where no custom tags have been set.

5.2.4 Considerations for DSD

If you have DSD/SDM format files, with extensions .dsf or .dff the HQPlayer Filter for up-sampling PCM will have no effect on the sound at all. The modulator will though. It is the combination of the *Modulator* (e.g, ASDM7) and the *Integrator* that effect sound quality when up-sampling DSD files. The Integrator is set in the DSDIFF/DSF settings dialogue box accessed from HQPlayer's

'File' menu. If 'Direct SDM' is checked in this dialogue box, DSD files will not be up-sampled. No HQPlayer DSP will be applied to DSD files in that case. This may turn out to be you preference for those files, or it may not. As usual experimentation is in order.

5.2.5 Special considerations for the poly-sinc-xtr filters

The poly-sinc-xtr (non-2s variant) family of filters in HQPlayer, may require the 'Multicore DSP' box in HQPlayer's settings to have a check mark placed in it, whereas with other filters the general recommendation is for this box to be filled with grey. The three options for this box are:

- Empty
- Check mark
- Filled with grey

I have found that on two very different music server machines, I could only get reliable playback with this family of filters, when this box had a check mark placed in it. Whereas the 'closed-form-16M' filter this box needed to be filled with grey for reliable playback. In both cases this was when up-sampling to the maximum DSD sample rate that these machines could handle, when up-sampling from PCM to DSD.

If you are experiencing the same on your machine, you may want to create an HQPlayer Settings file named 'extreme' and export it from HQPlayer.

If any of the 'poly-sinc-xtr' family of filters is being applied by one of the custom settings files to the music you've requested for playback, j River to HQPlayer will first look for a settings file named 'extreme' and, if it exists, will apply it. Any exceptions will then be applied on top of the settings from this 'extreme' settings file, rather than the 'default' settings file.

5.2.6 Settings for temporary file creation

- HQPlayer Temp Type
 - flac
 - * The default format used for temporary files.
 - aif
 - wav
- HQPlayer Temp
 - No
 - Yes
 - * Forces creation of temp files at all times, except where the original file is in dff/dsf format (DSD files).

5.2.7 Playlist related

- Load Playlist
 - No
 - <Playlist Name>
 - * The name of a valid Media Center playlist exported from your Media Center library in “.m3u8” format, to this script’s folder, e.g. “Blues” (entered without the double quotes).
- Playlist Shuffle
 - No
 - Yes

5.2.8 Artist related

- Artist Play All
 - No
 - Yes
 - * Results in all the files by the artist being loaded and played. Playback commences from the track selected for playback in J Remote/J River.
- Playlist Shuffle
 - No
 - Yes
 - * The tracks by the artist are shuffled before being loaded in HQ-Player. Playback commences from the track selected for playback in J Remote/J River.

5.2.9 Playback control

Only applicable if the “stoppause” parameter in the call-jr-ps.cmd file is set to “Yes”

- Pause
 - When you tap on the currently playing track it will be paused.
 - The next time you tap the same track, playback will resume for that track from the point where it was paused.
- Stop

- When you tap on *any track* within the currently playing Album, Artist or Playlist, HQPlayer playback will be Stopped, unless it is the currently playing track, in which case it will be paused.
- If playback was stopped, the next time you tap on *any track* in the current album, playback will be started in HQPlayer from the beginning of that track.
- If you tap on a track in a different album, artist or playlist, that album will be loaded and playback will commence from the track you selected.

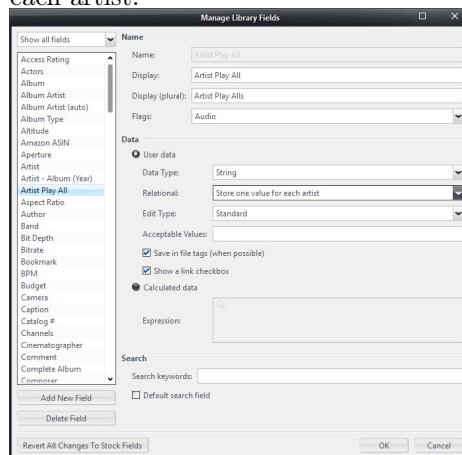
5.2.10 Artist related custom library field.

All of these custom tags are set up in exactly the same way as the first example, which was the Repeat All tag. The tag name and the value you wish to set it to must be entered exactly as shown above.

If you wish these tags to show up in J Remote you will need to set all the tags to their default values as shown under section 5.2.1, the Repeat All feature.

The only differences are that the “Artist Play All” tag is associated with the artist. That means that when the tag is edited from JRemote/Jriver for just one track by that artist, the edit will apply to *all tracks* of the artist.

So for the Artist Play All tag, in the drop down menu next to the relational field in the “Manage Library Fields” window, you need to select “Store one value for each artist.”



Chapter 6

Conclusion

For those of you who are used to using JRiver Media Center and appreciate its powerful features for managing libraries of locally stored files; but want to use it in conjunction with HQPlayer to take advantage of the particular sonic qualities HQPlayer offers, here is one solution that will allow you to use the two together.

I hope you get a lot of pleasure from it.